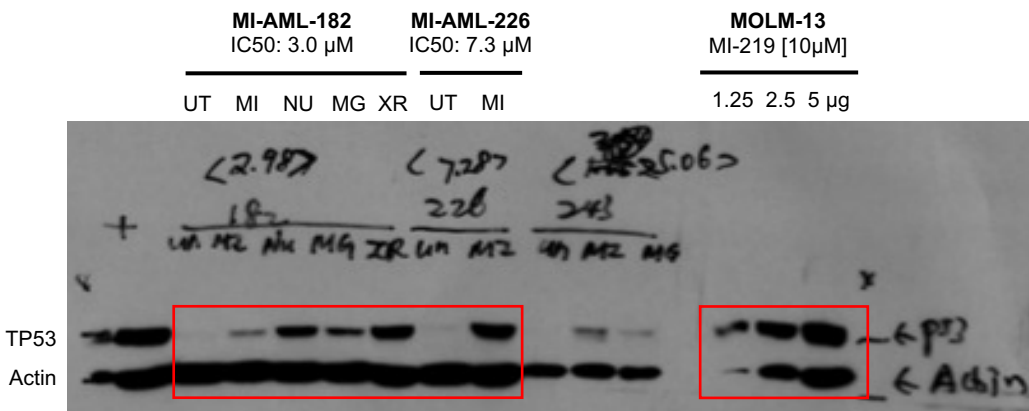
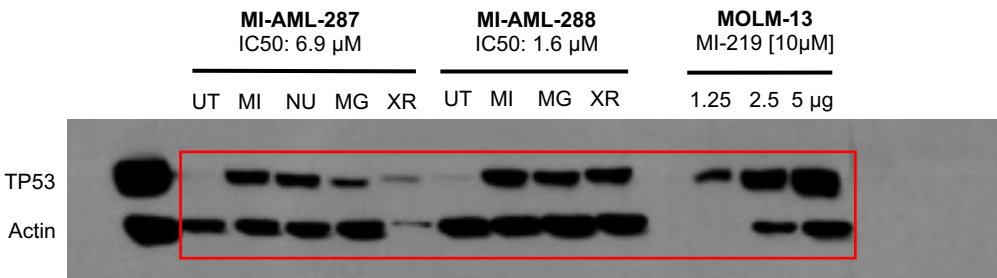
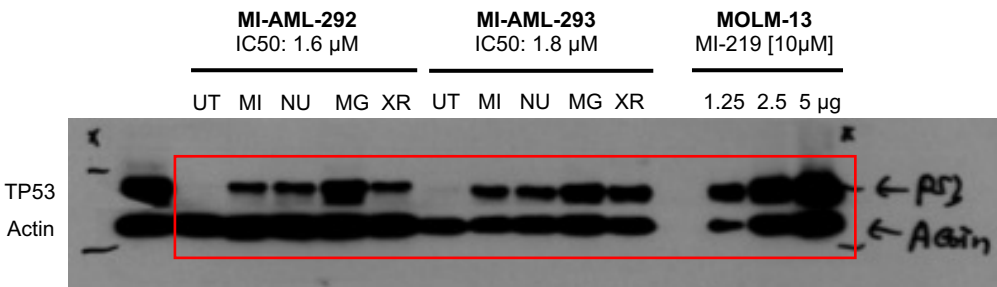


Full unedited gels for Figure 1: Sensitive AML



Full unedited gels for Figure 1: Sensitive AML (continued)

MI-AML-254
IC50: 4.8 μ M

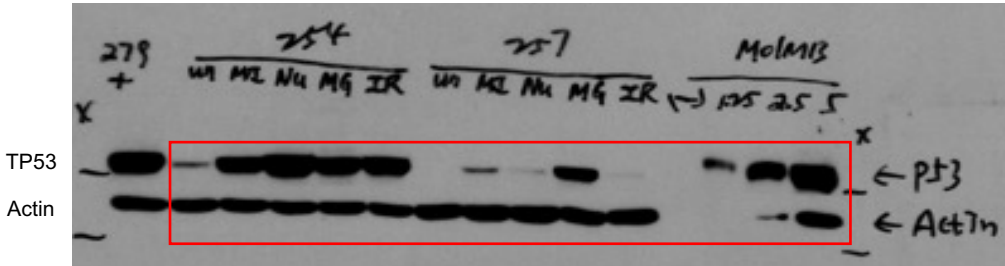
MI-AML-257
IC50: 6.9 μ M

MOLM-13
MI-219 [10 μ M]

UT MI NU MG XR

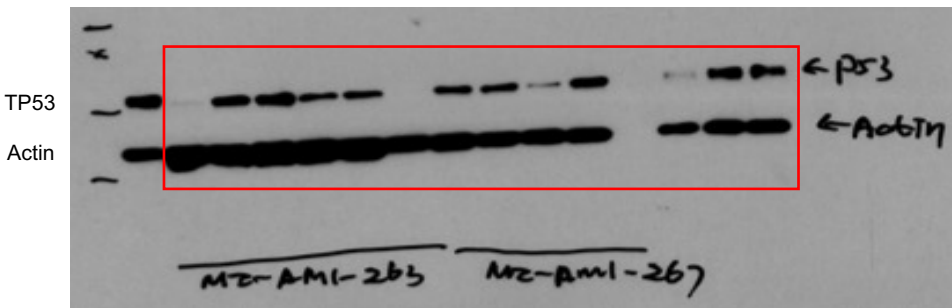
UT MI NU MG XR

1.25 2.5 5 μ g

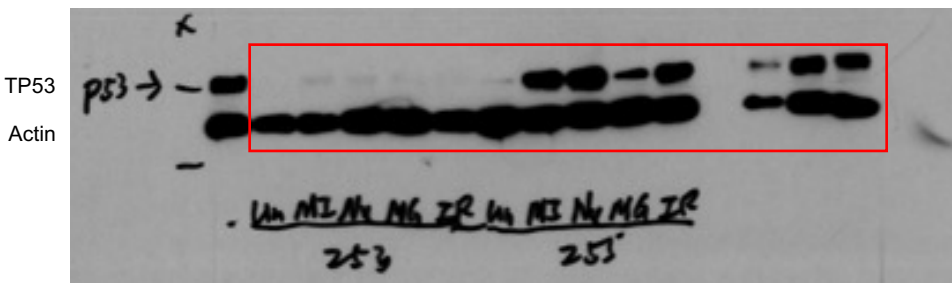


Full unedited gels for Figure 1: Resistant AML

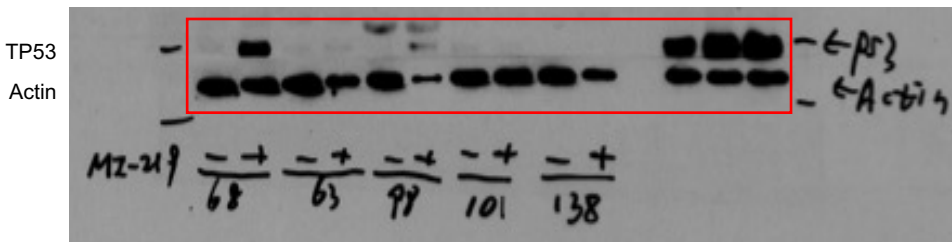
MI-AML-263 IC50: > 20 μ M					MI-AML-267 IC50: 15.7 μ M					MOLM-13 MI-219 [10 μ M]		
UT	MI	NU	MG	XR	UT	MI	NU	MG	XR	1.25	2.5	5 μ g



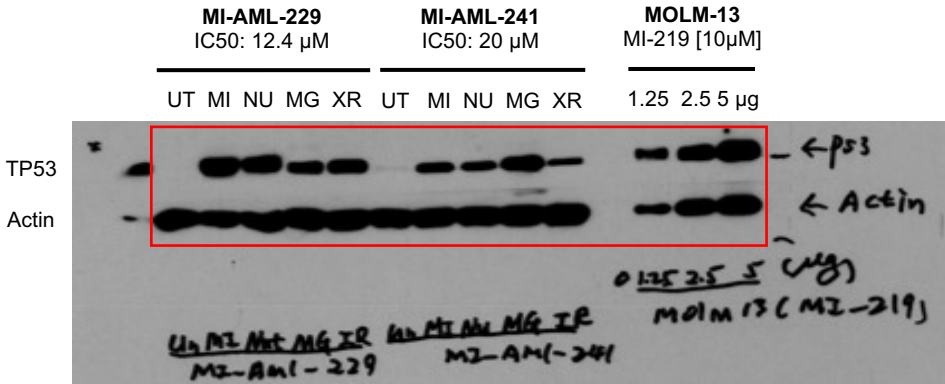
MI-AML-253 IC50: 11.1 μ M					MI-AML-255 IC50: > 20 μ M					MOLM-13 MI-219 [10 μ M]		
UT	MI	NU	MG	XR	UT	MI	NU	MG	XR	1.25	2.5	5 μ g



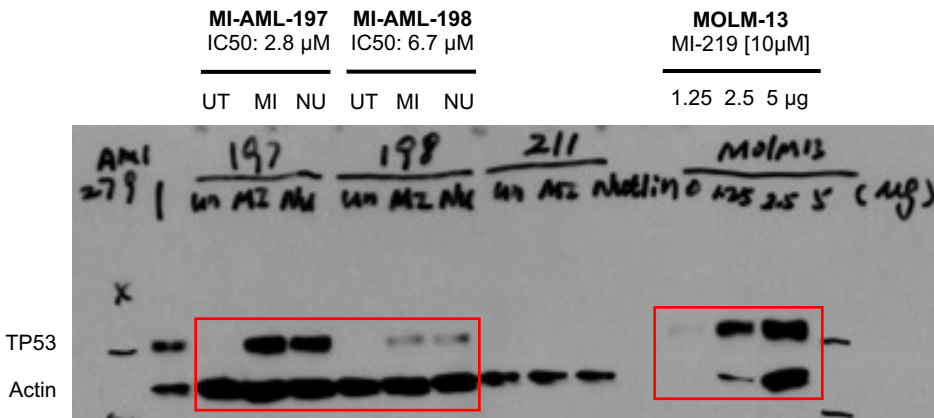
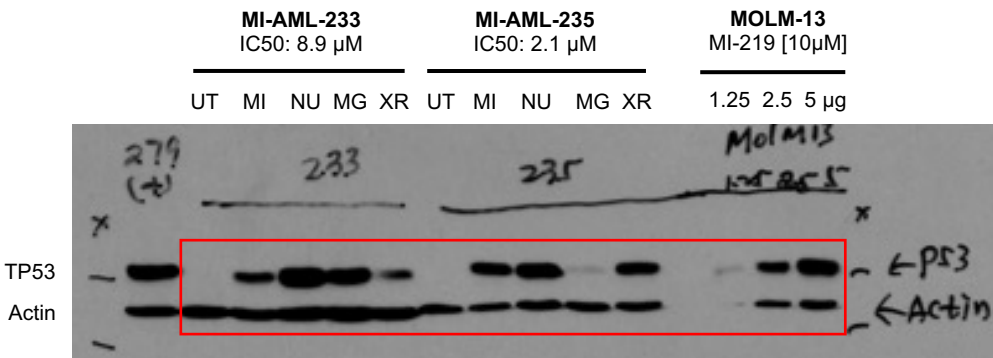
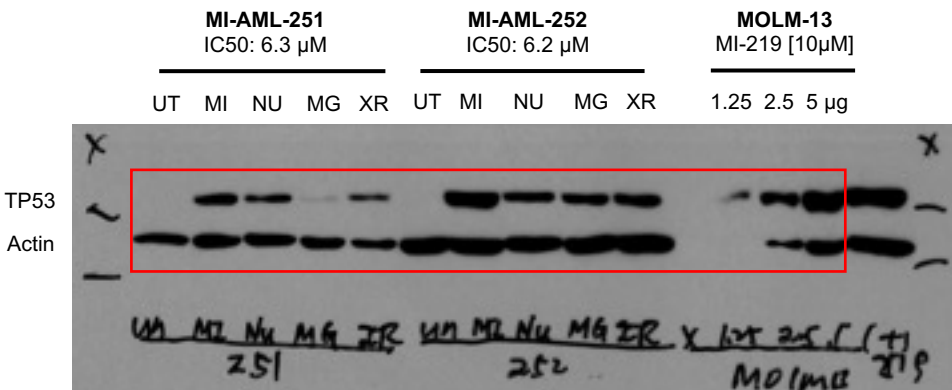
#68 10.9 μ M		#63 20 μ M		#98 20 μ M		#101 20 μ M		#138 20 μ M		MOLM-13 MI-219 [10 μ M]		
UT	MI	UT	MI	UT	MI	UT	MI	UT	MI	1.25	2.5	5 μ g



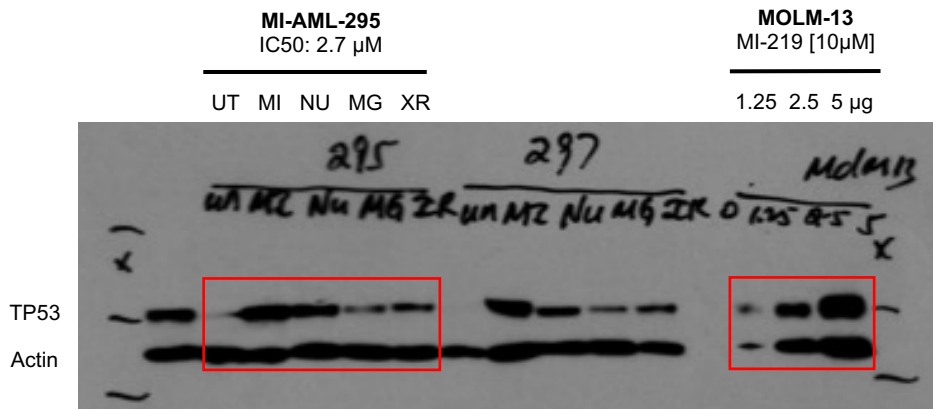
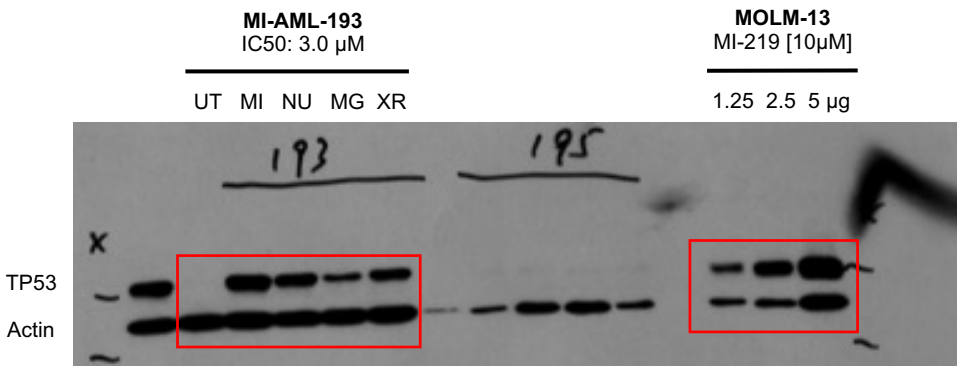
Full unedited gels for Figure 1: Resistant AML (continued)



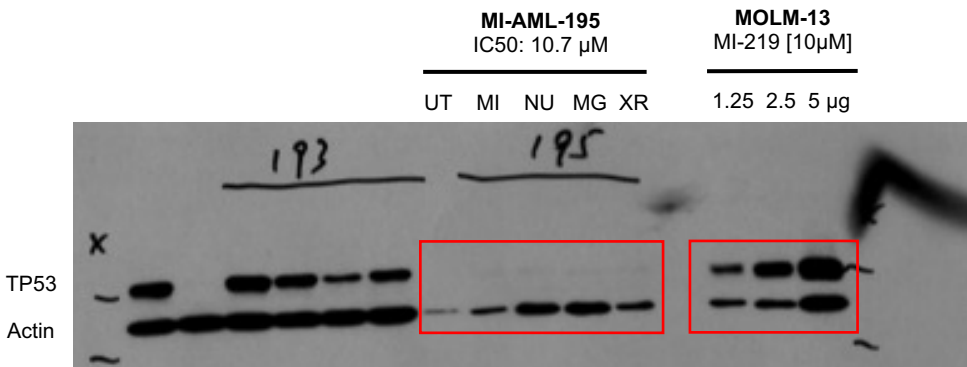
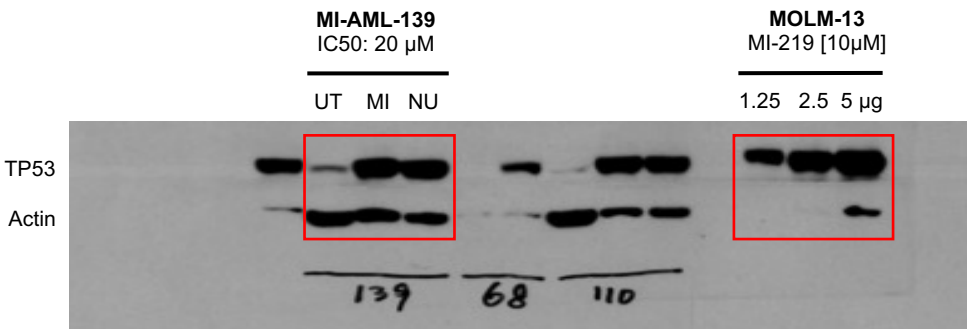
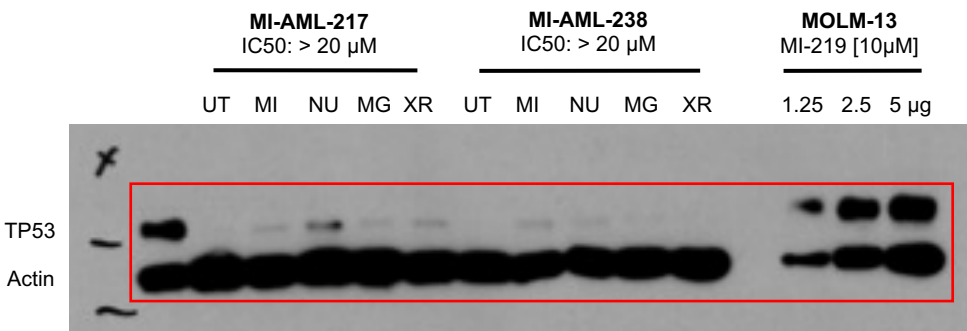
Full unedited gels for Supplementary Figure 1: Sensitive AML



Full unedited gels for Supplementary Figure 1: Sensitive AML (continued)



Full unedited gels for Supplementary Figure 1: Resistant AML



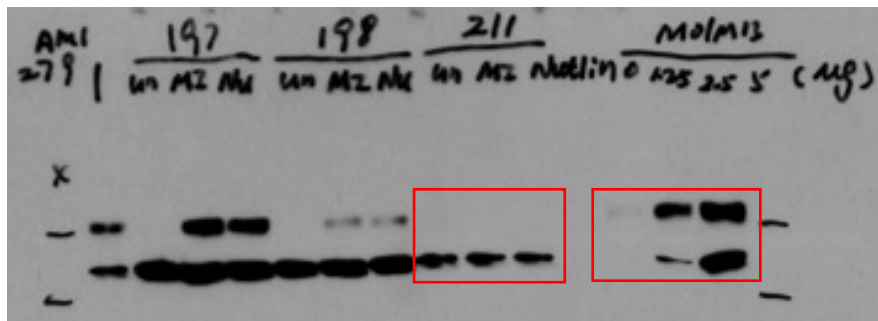
Full unedited gels for Supplementary Figure 1: Resistant AML (continued)

MI-AML-211
IC50: 20 μ M

MOLM-13
MI-219 [10 μ M]

UT MI NU

1.25 2.5 5 μ g



MI-AML-250
IC50: 20 μ M **MUT TP53**

MOLM-13
MI-219 [10 μ M]

UT MI NU MG XR

1.25 2.5 5 μ g

