

**Title:**

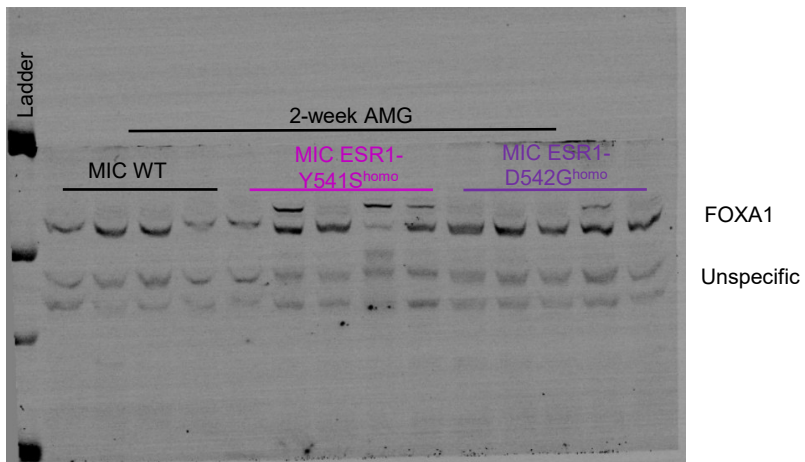
Activating mutations in *ESR1* contribute to an immunosuppressive breast tumor microenvironment by dampening cytokine secretion

**Authors:**

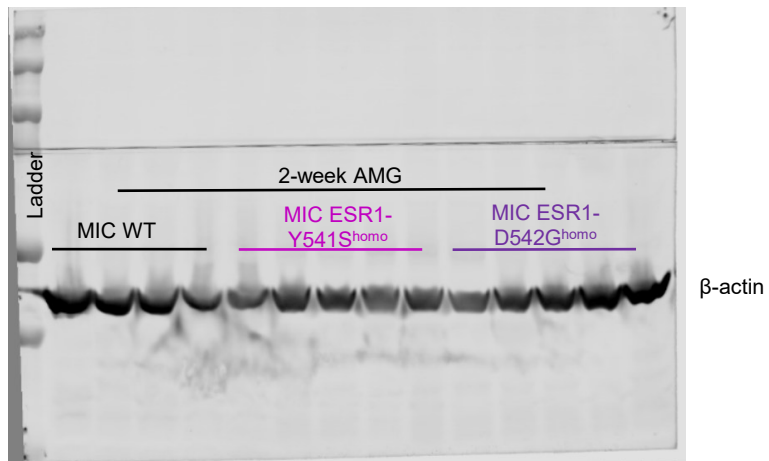
Yu Gu<sup>1,2</sup>, Dongmei Zuo<sup>1</sup>, Qixin Hu<sup>1,3</sup>, Virginie Sanguin-Gendreau<sup>1</sup>, Alain Pacis<sup>4</sup>, Marie-Christine Guiot<sup>5</sup>, Alexander Chih-Chieh Chang<sup>6,7</sup>, Tarek Taifour<sup>1,8</sup>, Chen Ling<sup>1</sup>, Adrian V Lee<sup>6,7</sup>, Steffi Oesterreich<sup>6,7</sup>, and William J. Muller<sup>1,2,9</sup>

**Unedited blots**

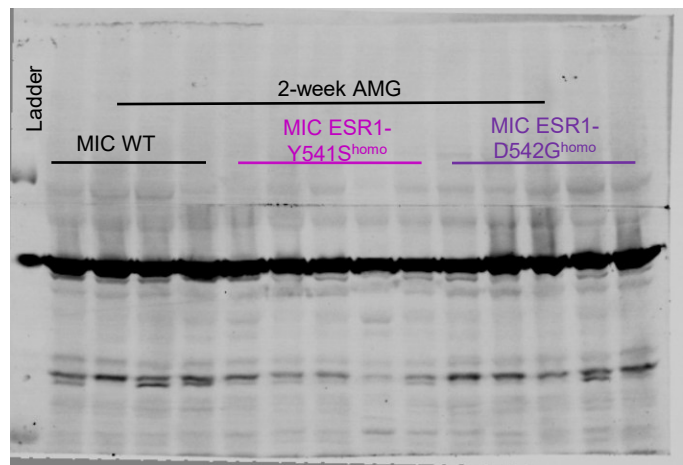
A



B



A

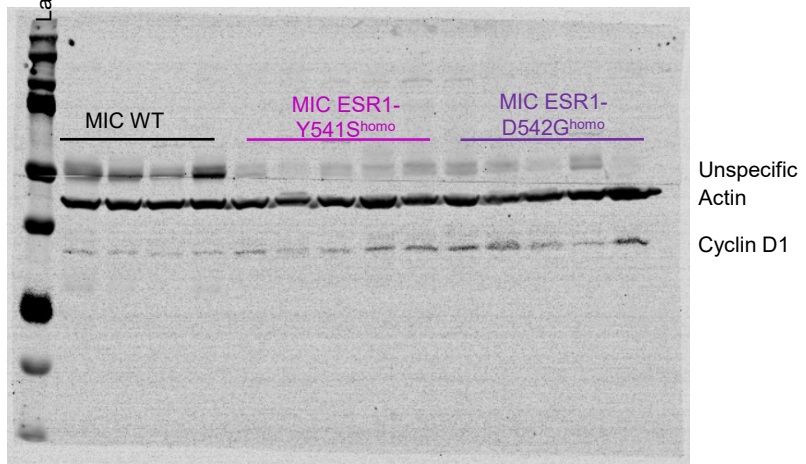


Tubulin

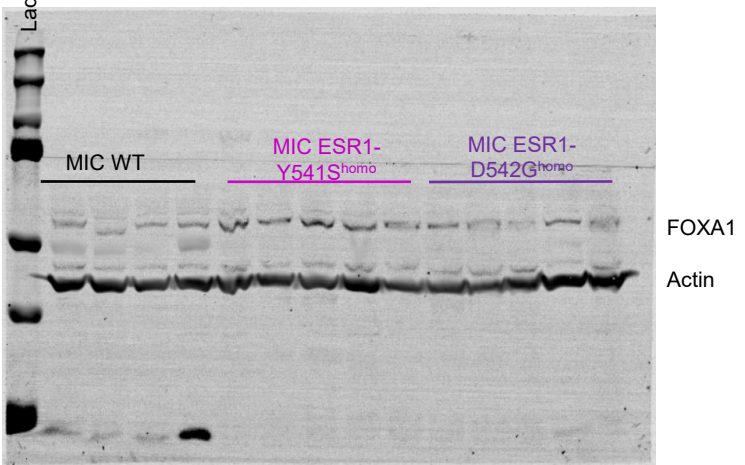
Cyclin D1

A. Full unedited blot/gel for Supplemental Figure 1B.

A

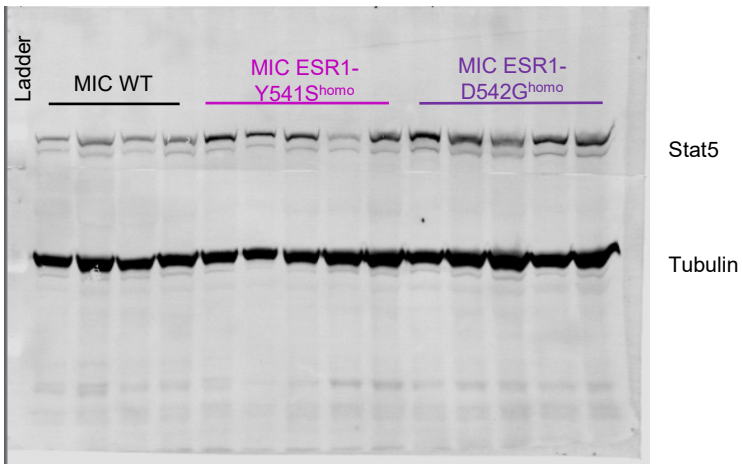


B

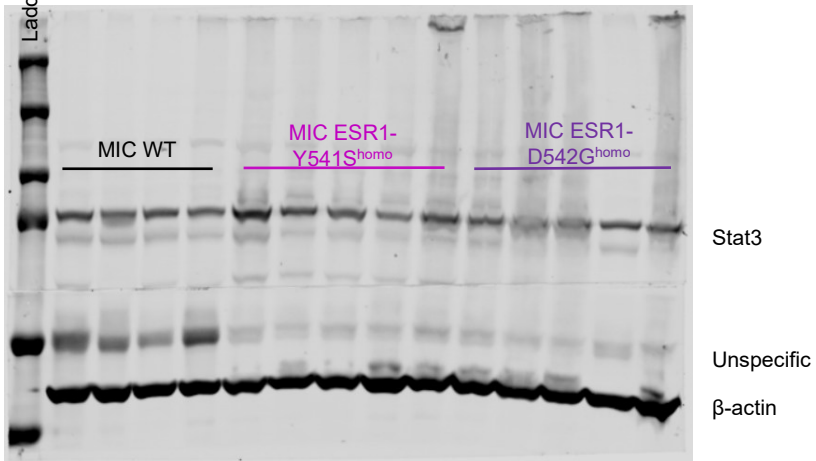


A-B. Full unedited blot/gel for Figure 2F.

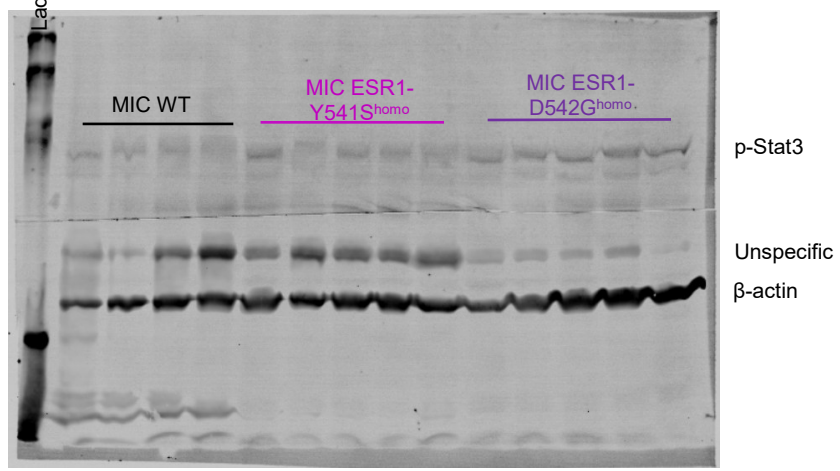
A



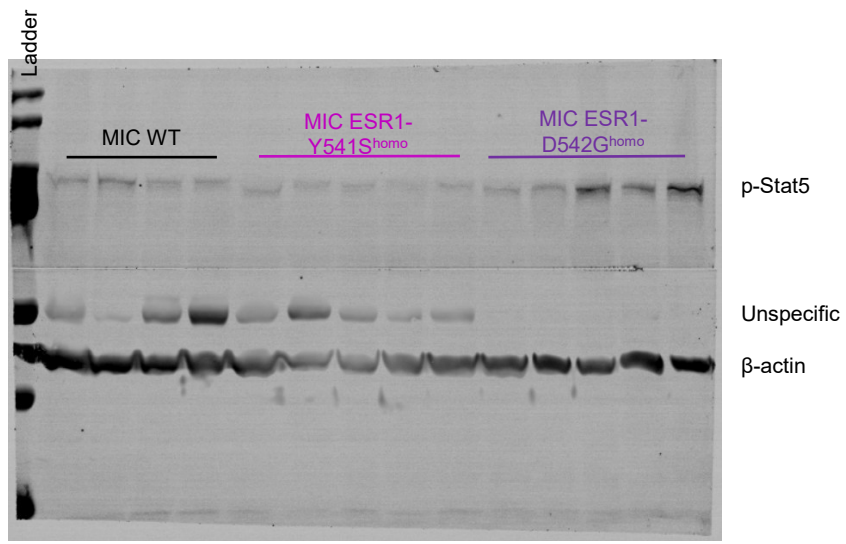
B



A



B



A-B. Full unedited blot/gel for Figure 8A.